

Information for Prospective Exchange Students

2017 Fall Semester

Version: 2017 Fall - 2017.01.20



[Fall Semester]
September – December
(Winter session: January)

[Spring Semester]
April – July
(Exam: 1st Week of August)

Issued by:

College of International Liberal Arts (iCLA) Study Abroad Section

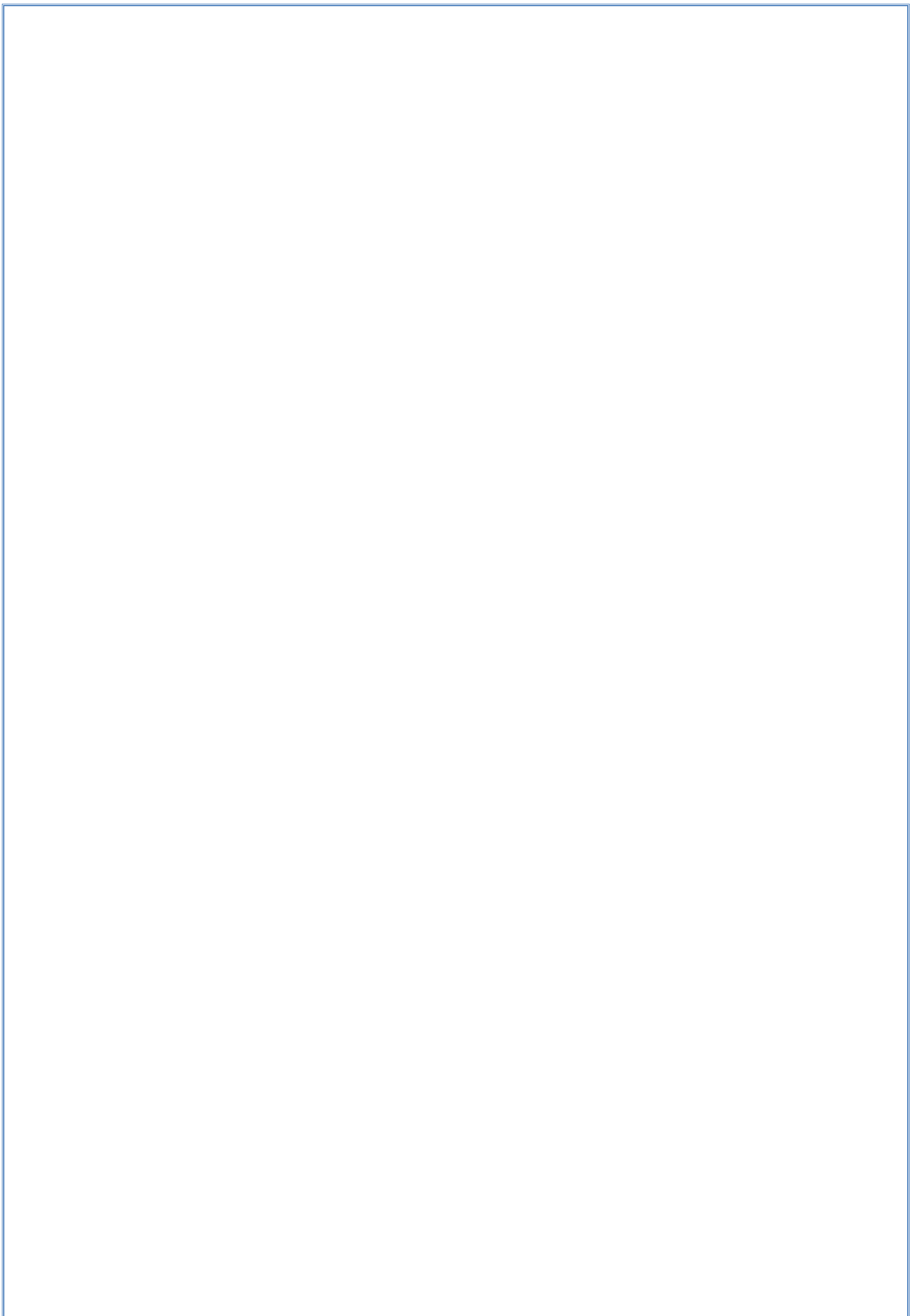
Exchange Student [Inbound] Web Page:

https://www.icla.jp/en/exchange_students/

Contact:

study.abroad.icla@ygu.ac.jp [inbound] (to iCLA)

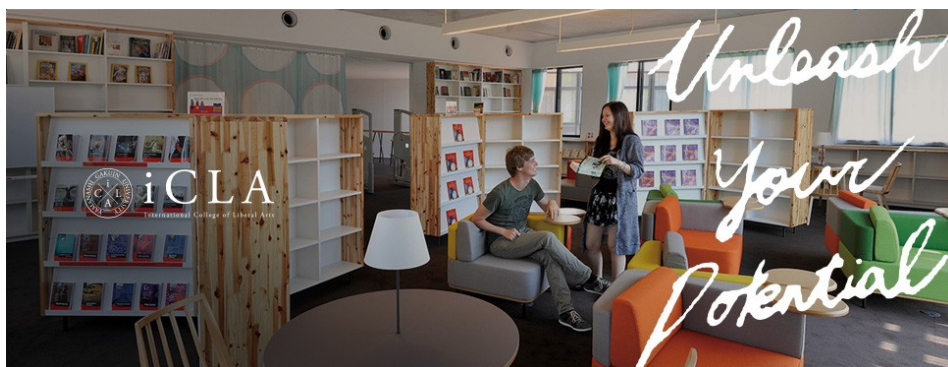
icla.outbound@ygu.ac.jp [outbound] (from iCLA)



Why iCLA?

- All English curriculum*
- World-class global faculty and academic rigor
- Outstanding Japanese Studies Program
- Beautiful nature, yet easy affordable access to Tokyo
- Guaranteed private dormitory room
- Brand new, state-of-art campus

* Except for Japanese language courses and a few Japan Studies workshops



Important Dates [Fall 2017 Admission]

Application Period

January 15 to **April 15**, 2017

* Nomination ideally at least 2 weeks before the application deadline.

** Rolling admissions are considered upon availability – please contact us.

Screening Period

April 17 to April 27, 2017

Results Announcement

April 28, 2017

Submission of CoE Application by (required for visa)

May 31, 2017

* Note: Dates in **RED** are deadlines

iCLA Exchange Students (Inbound) 2017 FALL Admission Schedule



As of Dec. 14, 2016

2017	Jan	Feb	Mar	Apr	May	Jun	Jul	Aug	Sep	Note
	①	← Application Period →			1/15 - 4/15					Application Period (2017 Fall)
				②	← Screening Period →	4/17 - 4/27				Screening (2017 Fall)
				③	●	4/28				Result Announcement
				④	★	5/8				Final Conf. by
					⑤	← CoE Application Period →	5/9 - 5/31			Submit CoE documents to iCLA
					* Dates reference only	⑥	← CoE Wait Time (Estimate) →	6/14 - 7/31		CoE (Expected Wait-Time)
					* Dates reference only		⑦	← Visa Application Period (Estimate) →	7/12 - 8/13	Apply for Visa
							* Move in dates may be changed	Move in Dates	Welcome to Japan!	⑧
							8/30-31	Class Begins		

* Minor changes may be made without prior notice - please check our website for the latest information: https://www.icla.jp/en/exchange_students/

Minimum Requirements for Eligibility

1. Completed at least one academic year at home institution
2. Cumulative GPA of at least 2.5 on a 4.0 scale or equivalent (some exceptions)
3. TOEFL score: 213 (CBT), 550 (PBT), 80 (iBT) or equivalent
4. **Two** letters of recommendation letters (**signed**) from home institution

* Japanese language skills not required at admission

** Please note that requirements above are only for your eligibility to apply. It does not guarantee your admission to the program automatically.

How to Apply

Submit a complete application to your home institution during the Application Period.

* All the required documents **MUST** be received by iCLA before the deadline mentioned above.

* Make sure you submit all the required documents in advance as preparing your application will take time.

Your Application must include:

1. Passport Copy (Photo Page)
2. Form 1: Application for Study Abroad at iCLA
3. Form 2: Faculty Recommendation Letters
(must be signed and **2** are required)
4. Form 3: Statement of Purpose
5. Form 4: Study Plan at iCLA
6. Certificate of English Proficiency (official TOEFL certificate or equivalent)
If you are a non-native English speaker
7. All Post-Secondary Academic Transcript(s)

Please password-protect your documents:

Your Password: fAll2017

Getting a Student Visa

- After receiving a result from iCLA, prepare the following documents (receive forms from iCLA):
 - Application for the Certificate of Eligibility
 - A digital ID photo (3 x 4 cm) **at least 400 dpi** (Color) saved as JPEG
 - Financial Status Document(s) (Main supporter's pay slip (if applicable) & Current Bank Statement OR Official Letter confirming the student loan(s)/scholarship(s))

Note: The min. of 100,000 JPY/month (x the no. months you plan to stay) will be required.
 - Certificate of Health (or Doctor's note stating you are fit for study abroad)
 - Agreement & Confirmation Letter to Participate to the iCLA Study Abroad program
- Upon receiving your documents, YGU will apply for a Certificate of Eligibility (CoE) at Immigration Office on your behalf.
- Once your CoE is issued, we will send it to your home institution together with the official letter of acceptance.
- Go to the nearest Japanese embassy/consulate to apply for a student visa. Check the embassy website for required documents and application fee.
- After the visa has been processed, obtain the visa stamped in your passport from the embassy/consulate.

Please password-protect your documents:
Your Password: fAll2017

Cost (approximate)

Monthly Services	Monthly Fee	1 semester [Spring or Fall Only]	2 semesters [Spring & Fall]
Private dormitory room	JPY 35,000	4 months Spring: Apr-Jul Fall: Sep-Dec * Summer/Winter session takes in Aug. & Jan. respectively	9 – 12 months Please note that depending on when you are starting, the cost for dorm varies. Apr. – Dec. (9 months) or Sept. – Aug. (12 months)
Utilities & Maintenance	JPY 12,000		
Meal Plan (3 meals/day; Mon-Fri)	JPY 40,000*		
One-time Services	One-time Fee		
Dormitory cleaning fee	JPY 16,200		
Total Cost:		JPY 357,200 (Spring) JPY 353,200 (Fall)	9: JPY 691,600 12: JPY 910,000

Total Costs are estimate only.

Actual costs may vary depending on your meal plans or the actual Move-out date.

Note:

- In principle, all students must enroll in meal plans. Please contact iCLA administrative office for special diets or any other dietary concerns. [icla.dorm@ygu.ac.jp]
- Meals are provided from Monday to Friday only.
- Cooking facilities are not available on campus. Cooking in the dormitories is prohibited.
- Fees must be paid upfront at the start of each semester for duration of each semester.
- In principle, you may not stay in the dormitory before or after your studies at iCLA. However, you may stay in the dorm during holiday periods between semesters.
- Actual board fees may differ depending on the month.
- Cost calculation **does not** include other spending money or transportation fees.

Financial Aid

Currently no financial aids available for short-term international students at iCLA. We will update you when a new opportunity becomes available for short-term international students.

Frequently Asked Questions

Q: Do I need to obtain a student visa in Japan?

A: Yes, all international students are required to obtain a proper student visa BEFORE entering Japan. (Switching a visa status from tourist to student is not accepted under the current immigration law in Japan in principle).

Q: How long does it take to obtain my student visa?

A: In Japan, you must go through 2 steps in order to apply for any kinds of visas.

1) Apply for CoE (certificate of eligibility) by proxy application through iCLA in Japan.

This process can take up to 2-3 months depending on the timing of the application. Please respect the deadline.

2) Apply for Visa (with original CoE issued for you) at the nearest Japanese Embassy or Consulate General outside of Japan.

Your original CoE will be sent to your home institution (international office) unless requested otherwise (EMS fee applies). Once you submit your visa application, the normal processing time is between 2 – 4 weeks.

A: Issuing a CoE will take approximately 1-2 months. This can be done only through us (iCLA) as a hosting institution. In order to get your CoE processed as quickly as possible, make sure to submit all the required documents in a timely manner. After receiving a CoE, the original CoE will be sent to your home institution. You can apply for a student visa with your CoE (effective for 3 months) at the nearest Japanese Embassy or Consulate General. It will usually take up to 2 weeks.

Q: Will I need to open a Japanese Bank Account?

A: You are not required to open a Japanese bank account since the ATMs on campus can accommodate bank transfers by cash deposits. Japan Post Bank has an ATM on campus with foreign card functionality.

Please check out our Website for more information:

https://www.icla.jp/en/exchange_students/

Inquiry about visa ✉ :

study.abroad.icla@ygu.ac.jp

Inquiry about dorm ✉ :

icla.dorm@ygu.ac.jp

iCLA Fast Facts

General description: Four-year, residential international liberal arts college

Location: Kofu, Yamanashi at the foot of Mt. Fuji surrounded by mountains at the center of Japan's wine industry (less than 2 hours from Tokyo by train)

Parent Institution: Yamanashi Gakuin University (YGU), a family-owned institution established in 1946, offering the entire vertical of education from kindergarten to graduate school (about 6,500 YGU students)

Accreditation: Japanese Ministry of Education

Academic year: Two semesters: Spring (early April-late July), Fall (early September-late December)

Degree-seeking students: 80 per year: 50 Japanese, 30 internationals.

Exchange students: Roughly 40 international exchange students on campus at any given time representing about 12 different countries.

Full-time faculty: 23 full-time and approximately 20 adjunct faculty. 80% of full-time faculty are non-Japanese. Members of the faculty hold graduate degrees from ANU, Berkeley, Berklee, Cambridge, Chicago, Harvard, Indiana, Minnesota, Princeton, Sheffield, and Stanford.

Features: Rigorous, interdisciplinary, student-centered, active, autonomous learning in a global, residential campus atmosphere.

Language of instruction: All courses taught in English (>100 courses)

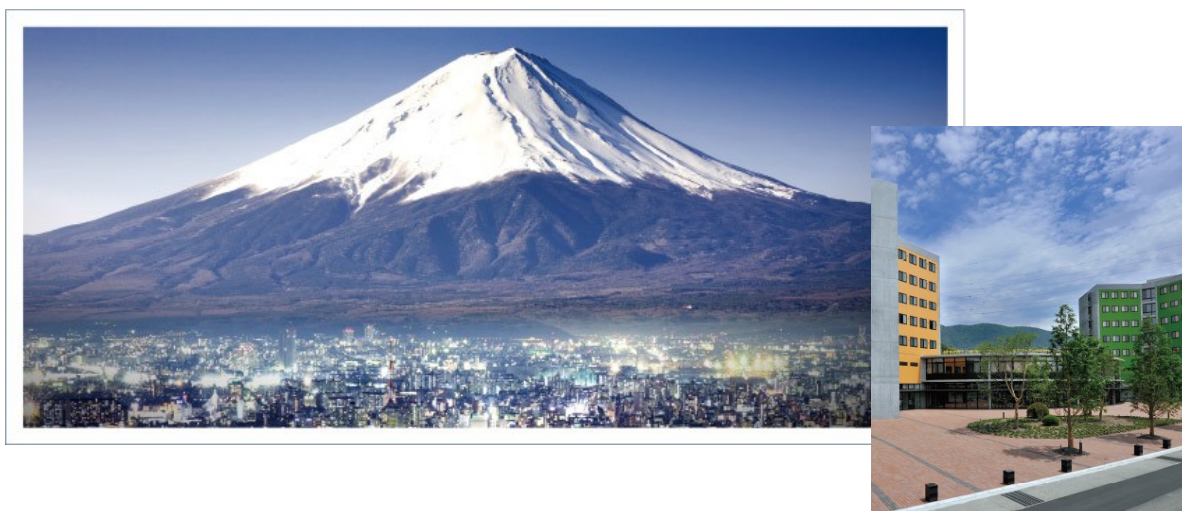
Liberal arts curriculum: 3-credit courses in Art, Music, and Theater to Calculus, Physics, and Natural Sciences. 1-credit experiential "workshops" in Japan Studies (Zen, Koto, Shakuhachi, Noh Theater, and Martial Arts) and Acting, Directing, Dance, and Music and Creativity.

Japanese language instruction: from Beginning to Advanced

Campus facilities: Brand new dormitories, classrooms, and offices designed by [Toyo Ito](#) (one of the world's most celebrated architects - 2013 Pritzker Award winner)

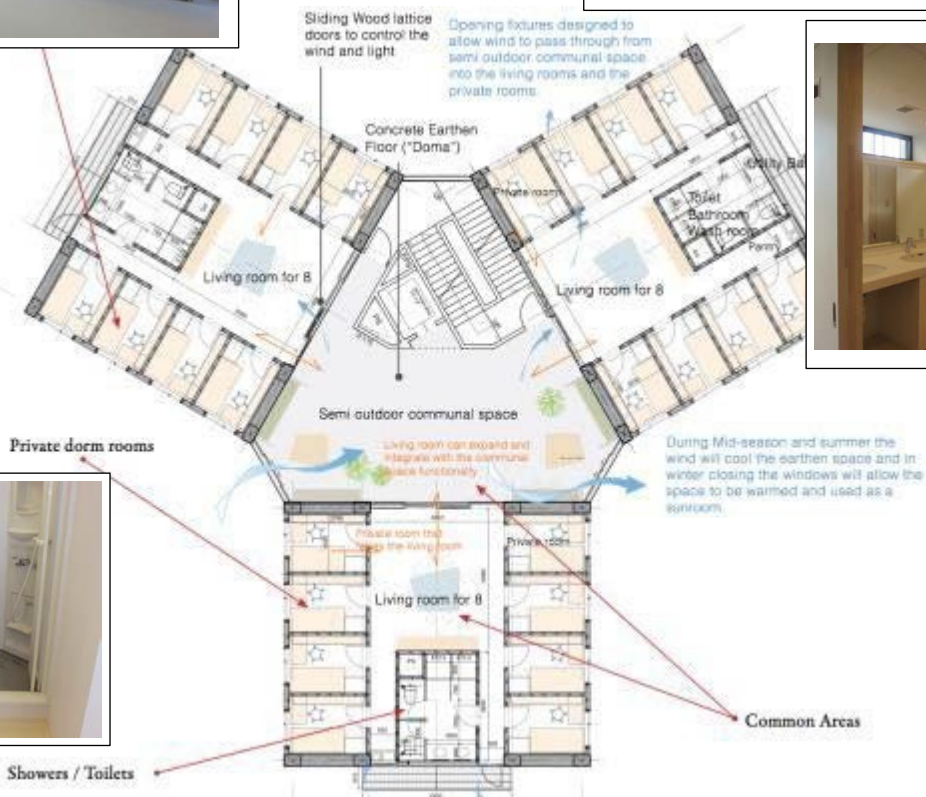
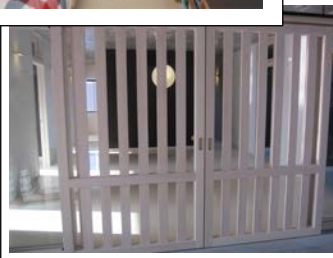
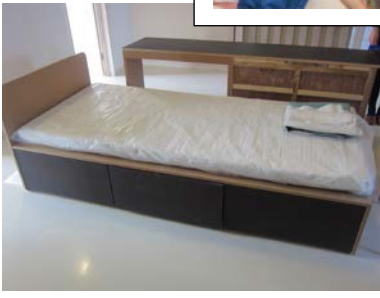
Residential: All students live on campus in internationally integrated dorms

World-class athletics: YGU has produced 52 Olympic athletes in 40 years in wrestling, martial arts, swimming, ice speed skating, field hockey, and other areas. Faculty includes 2002 Karate world champion, 5-time national Judo champion, Olympian track and field coach.



Information : As of January 2017

Private Dormitory Room & 24Hrs Laundry Room



Students live in a unit with maximum of 8 other Japanese and/or international students. Every student gets a single room. Students in a unit share a bathroom and a living room with their unit-mates. Breakfast, lunch and dinner are served in the Dining Hall.

2F: iCLA Laundry Room (24 Hrs Access)



Available on the 2F in each dormitory building
Fees are all included in your utility fees

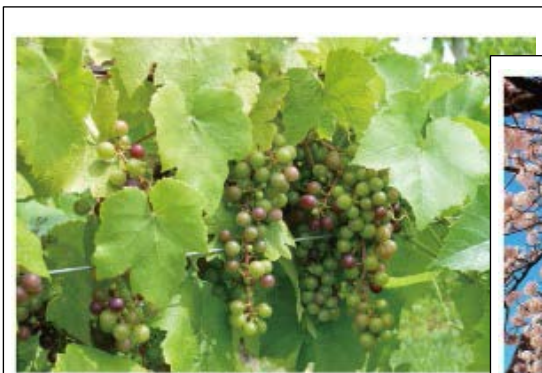
Easy Access to Tokyo

An hour and a half from Shinjuku stn. to Kofu stn. (by Express Train)



&

Beautiful Yamanashi



College of International Liberal Arts (iCLA)
Yamanashi Gakuin University

2-7-17 Sakaori, Kofu, Yamanashi 400-0805 Japan
Phone :+81-55-224-1350 Fax :+81-55-224-1991
Email: study.abroad.icla@ygu.ac.jp [inbound]
Website:<http://www.icla.jp/en>