
STUDY ABROAD AT DONG-A 2015

THE EXPERIENCE OF A LIFETIME AWAITS YOU





KOREA

- Korea, the driving force behind the Asia's Economic growth
- Korean Wave : K-pop, Korean drama
- Country Name : Republic of Korea(South Korea)
- Geography : Located in East Asia
(Faces Japan across the East Sea and China across the Yellow Sea)
- Official Language : Korean(Writing system: Hangeul)
- Population(2014 Estimate) : 51,302,044(26th)
- Climate : Four distinct seasons





BUSAN

- Second largest city, where located on the southeastern tip of Korea
- 5th largest port city in the world(The logistics hub of northeast asia)
- No. 1 tourist attraction in Korea with beautiful beaches, mountains and rivers
 - Popular destination for International events & conventions (APEC, BIFF, G-Star, International Motor Show etc.)
- Average Temperature : Spring 15°C, Summer 32°C, Fall 25°C, Winter 2°C
- Convenient Transportation(it only takes 2hrs 50mins to Seoul by express train)
 - Safe and cheap to live compare to Seoul(Capital city)



ABOUT DONG-A UNIVERSITY

1946

Establishment

13 Colleages
2 Faculties
58 Majors

Comprehensive University

22,000
Including 400 international students

Total number of Student

2,000

Total number of Lecturers

152
(As of 2014)

English lectures available in various majors

Seunghak Campus
Industrial cooperative campus

Bumin Campus
Glocal campus

3 Specialized Campus

Gudeok Campus
Medical campus

WHY DONG-A?

BEST

Best private university in Busan

ACCREDITED

International Education Quality Assurance System by ministry of education

HARMONY

Students from 33 countries makes great combination of different cultures

SCHOLARSHIP

Various scholarship benefits
- Selected for Global Korea Scholarship Institution
- 'Dong-A Global Scholarship', 'Brain Dong-A'

INTERNSHIP

Supporting for internship or job placement by using 180,000 alumni

OUT OF CLASSROOM PROGRAMS

Diverse learning support & cultural experience activities



Current status of International Affairs



Student exchange programs

Category	Program	Contents
Long term programs	Dual degree program	Business administration - Western Michigan University(USA) - University of International Batam(Indonesia) - Shipbuilding Institute of Polytechnic Surabaya(Indonesia) Mechanical / Electronic / Computer Engineering - Institute of Technology, Carlow(Island)
	Exchange program I ¹⁾	With 53 institutions in 14 countries
	Exchange program II ²⁾	With 9 institutions in 4 countries
Short term programs	Overseas language learning program	Chinese, English and Japanese programs available during school holidays
	Cultural exchange program	Short cultural exchange programs with partner universities in China and Japan
	Korean Summer Session (Korean language & cultural experience)	Invite students from partner universities from many different countries
	Short term korean language Course	Available during school holidays

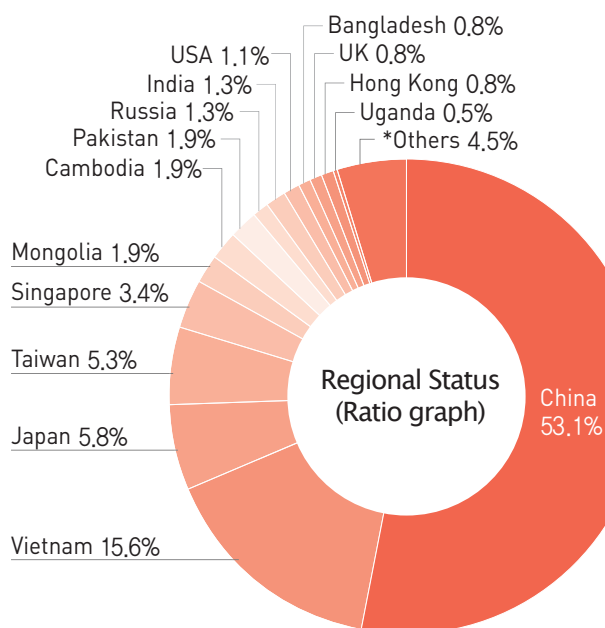
※ About 1,000 students are participating in student exchange programs

1) Exchange program : Tuition fee waived at the host university and take language course or undergraduate courses for 1~2 semester under mutual agreement

2) Exchange program : Dong-A university's tuition fee waived while the student pays tuition fee at the host institution and take language course or undergraduate courses for 1~2 semester under mutual agreement (Only available for Dong-A Korean students)

International students at Dong-A (As of Oct 2014)

– 400 international students from 32 different countries



※ Others : Gabon, Gambia, New Zealand, Liberia, Macau, Malaysia, Brunei, El Salvador, Indonesia, Jamaica, Canada, Kenya, Kyrgyzstan, Tanzania, Philippines, Hungary, Australia



Faculty and Department for Undergraduate



Year 2016

Faculty	Department
Liberal Arts	Philosophical Life Medical Ethics, History, Archaeology and Art History, Korean Language and Literature, English Language and Literature, German Language and Literature, French Cultural Studies, Chinese Studies, Education, Children and Family Studies
Natural Science	Mathematics, Materials Physics, Chemistry, Biological Science
Social Science	Political Science and Diplomacy, Public Administration, Sociology, Social Welfare, Media Communication, Economics, Finance
Business	Business Administration, International Tourism, International Trade, Management Information Systems
Life Resource Science	Molecular Genetic Engineering, Applied biology, Biotechnology, Life Resource Industry Studies
Engineering	Architectural engineering, Civil Engineering, Environmental Engineering, Energy and mineral resources engineering, Electrical engineering, Electronics engineering, Computer engineering, Mechanical engineering, Industry and management systems engineering, Naval Architecture and offshore engineering, Chemical engineering, Material science and engineering, Organic Material and polymer engineering
Design Environment	Architecture, Industrial design, Fashion design, Urban planning engineering, Landscape architecture
Arts and Sports	Arts, Music, Physical education, Taekwondo Security
Health Science	Food science and nutrition, Pharmaceutical Life Engineering, Health Management
Medicine	Pre-medicine, Medicine, Nursing
Global business	Global business
China-Japan Studies	Chinese studies, Japanese studies
Seokdang honors	Public policy

Faculty and Department for Graduate School



Year 2016

Category	Departments/Majors	
Graduate School	Liberal arts & social science	Philosophy, Korean language & literature, Creative writing, English language & literature, History, Archaeology & art history, Education, Japanese studies, Chinese language & literature, Law, Political science, Public administration, Economics, Sociology, Social welfare, Communication, Business administration, International trade, Accounting, Tourism management, Management Information systems, Finance
	Natural sciences	Mathematics, Physics, Chemistry, Biological science, Food science & nutrition, Child & family studies, Fashion & textiles, Biotechnology, Applied bioscience, Nursing, Health science
	Engineering	Architectural engineering, Architecture, Civil engineering, Mechanical engineering, Chemical engineering, Electrical engineering, Industrial management systems engineering, Environmental engineering, Metallurgical engineering, Electronic engineering, Urban planning & landscape architecture, Energy & mineral resources engineering, Computer engineering
	Sports & arts	Physical education, Taekwondo, Fine arts, Music, Plastic design
	Medicine	Medicine
	Cooperative programs	International law affairs, Medicine, Material physics, Convergence Science & Technology, Particle Accelerator and Medical Physics, Chemical Engineering
	Interdisciplinary Programs	Musicology and culture, Port and logistics systems, Science of arts, Nano engineering, Biomedical ethics, Infant & child education, Public enterprise policy
Others	Graduate School of International Studies(International Trade Disputes Resolution, FTA International Trade, Global Korean Studies, Global Multiculture), Graduate School of Medicine, Law School, Graduate School of Business, Graduate School of Education, Graduate School of Industry and Information, Graduate School of Social Welfare, Graduate School of Law and Police, Graduate School of Cultural and Art)	

Korean Language Course

Korean language courses are available for foreigners(4 semesters)

Extra mile service minded



Free pick-up service, 1:1 Buddy programs, Professional counselling for international students, TOPIK study group, International student clubs, Cultural excursions, Internship placements, Job fairs etc.

Special facilities of Dong-A



International Student's Dormitory : Will be available from May 2015

Off-campus Dormitory for International Students

- Twin share room
- About \$150 per month(Cooking available)

Dong-A University Hospital (Special discount for Dong-A international students)

※ Others : Free internet access on campus, Sports facilities, Cafeteria, Library, Career Development Center, University Museum, Multi purpose auditorium etc.

Hanlim Dormitory (On-campus student accommodation)



International student's dormitory image view



Scholarships



	Departments/Majors		Departments/Majors
Under graduate	Undergraduate applicant with TOPIK level 5 or above Undergraduate applicant with TOPIK level 3 or 4		100% of the tuition will be waved 50% of the tuition will be waved (Only for the first semester)
	From 2nd semester	Students whose GPA falls within the top 10% ~ 80%	20~100% of the tuition will be waved
Graduate	Above TOPIK score of 4th grade TOEFL600, CBT250, iBT 100, TEPS600, IELTS 6.5		70% tuition waiver
	Above TOPIK score of 3rd grade TOEFL550, CBT210, iBT 80, TEPS 550, IELTS 5.5		50% tuition waiver
	Teaching Assistant		25~100% of the tuition will be waved
Internship	International students who work for the Office of International Affairs		\$100~\$200 per month
Others	Busan Foundation for International Activities Scholarship, Korea-China friendship Scholarship, Sejung Scholarship etc.		

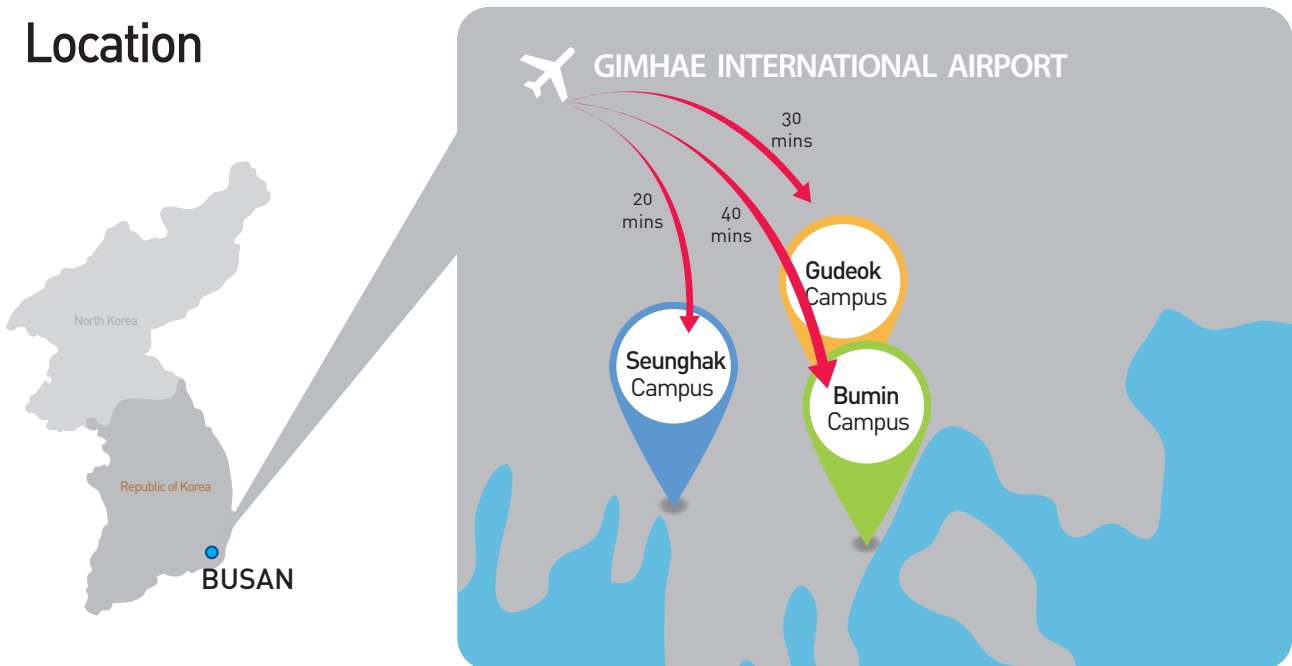


International Network

Total 196 institutions in 27 countries



Location



CONTACT US

| **E-mail** contact@donga.ac.kr | **Homepage** <http://global.donga.ac.kr>

| **Admission & General inquiry** +82 51-200-6442~4, +82 51-200-6446

| **International relations & student Exchange(In/Outbound)** +82 51-200-6447~8 | **Fax** +82 51-200-6445

| **Address** 602-760, 225 Gudeok-ro, Seo-gu, Busan, Korea