

Kanazawa Seiryō University

KANAZAWA SEIRYO UNIVERSITY
金沢星稜大学
<http://www.seiryō-u.ac.jp/en/>

The International Exchange Center

TEL:+81-76-253-3896

FAX:+81-76-253-3995

E-mail:iec@seiryō-u.ac.jp

〒920-8620

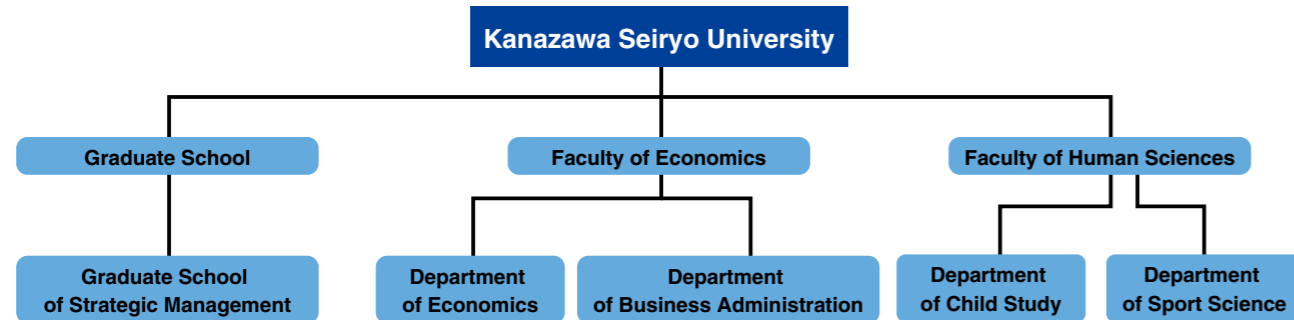
10-1 Ushi, Gosho-machi,
Kanazawashi, Ishikawa Prefecture



Faculty of Economics-Department of Economics / Department of Business Administration
Faculty of Human Sciences-Department of Sport Science / Department of Child Study
Graduate School (Strategic Management: Master's Program)

About Kanazawa Seiryō University

Kanazawa Seiryō University is a private university in Kanazawa City, Ishikawa, which is located in the Hokuriku region of Japan. Formerly known as Kanazawa College of Economics (a college with only an economics department), it was founded in 1967 by Inaoki Educational Institution. The name was changed to Kanazawa Seiryō University in 2002, and the graduate school was established the same year. In 2007, the Faculty of Human Sciences was added, and it is now a university with a Faculty of Economics, a Faculty of Human Sciences and a graduate school.



The primary educational goal of Kanazawa Seiryō University is to cultivate independent professionals. We welcome young people who are eager to find their unique role in society, be sincere to themselves and others, and reach their goals.

Faculty of Economics

Through systematic lectures with a focus on seminars, this faculty cultivates people to be able to enjoy active business careers in the local and international community.

Faculty of Human Sciences

This faculty cultivates people dedicated to the enrichment of human society. Students will scientifically study the comprehensive development of the human mind, body, and spirit as well as skills development.

Graduate School of Strategic Management

The Graduate School of Strategic Management (master's program) covers various branches of the complex subjects of economics and management, and the purpose is to research and teach specialized sciences. The program seeks to develop human resources who have the ability to plan and execute management strategies, lead regional economic activities, as well as to produce specialists in corporate organizations.

Number of Students and Instructors (As of May 1, 2013)

Number of Students

One-Year Quota	Total Capacity	Total Registered Students	Males	Females
Faculty of Economics				
380	1,470	1,766	1,076	690
Faculty of Human Sciences				
120	420	503	270	233
Undergraduate Total				
500	1,890	2,269	1,346	923
Graduate School				
10	20	19	13	6

Number of International Students

Faculty of Economics	52
----------------------	----

Number of Instructors

Full-time Instructors	75
Part-time Instructors	63

Kanazawa Seiryō University currently has around 2,300 undergraduate students and 19 graduate students. This includes 52 international students. In the nearly 50 years since its founding, Kanazawa Seiryō University has become rooted in the Hokuriku region and grown tremendously with roughly 15,000 students having graduated from the university already. In the aim of cultivating global human resources, a new Faculty of Humanities and Department of International Culture (tentative name) will be established in 2016.



Message from the President

Kanazawa Seiryō University upholds the cultivation of sincere professional people who can play a useful role in society as its school philosophy, and positions the nurturing of independent professionals at the core of its educational objectives.



Masafumi Miyazaki
President of Kanazawa Seiryō University

Past and current initiatives

Since fiscal 2004, the teaching faculty has worked in unison to implement education reforms through the university's own unique program. In addition to improving students' basic academic abilities and basic skills needed to function in society through this program, the university has created a system that allows students to steadily develop the ability to surpass themselves and graduate as independents. This has been achieved by providing students with academic support with clear objectives (Career Development Program), support for independent student activities both inside and outside school (Seiryō Jump Project), and careful career guidance. The success of these initiatives has been widely recognized, and is reflected in the increasing number of applicants and a rate of successful employment that is among the best in the country.

New initiatives

Our students' abilities have steadily improved over the ten years of these reforms, an achievement that has allowed us to introduce a more advanced education program. In light of the demand for graduates with new attributes that has arisen amid the rapid increase in globalization, we will begin implementing new education reforms to take us to the next stage under a five-year plan beginning fiscal 2014. The initiatives at the core of our advanced education program are aimed at the development of systems to reliably ensure quality and evaluate the performance of education in the bachelor's degree programs offered by the Faculty of Economics and Faculty of Human Sciences.

Adapting to a global society

Society is currently undergoing changes to every facet of politics, economics, culture, and day-to-day life in such a way that direct exchanges with the world beyond the bounds of nations, distance, and time are on the way to becoming an everyday experience. This kind of society requires graduates to have the ability to act from a global viewpoint and at the same time possess a strong individual identity and display originality to avoid being swallowed by the waves of globalization.

With an eye to establishing a new faculty with the educational objective of developing globally competitive young men and women, we have unrolled a new education program featuring a university-wide initiative aimed at enhancing students' English communication skills by effectively doubling the amount of English classes, a curriculum that puts a priority on cultural education, and specialty subjects taught in English. Part of the program was already introduced last year in the Faculty of Economics.

Both faculties already offer overseas language training and overseas study programs. Foreign language students and international students from the university study in Australian, Canadian, and British universities. In addition to letting students earn credits for their time abroad, these programs have steadily improved educational results by enhancing students' understanding of foreign cultures and English communication skills. Moreover, our overseas volunteer program in the Philippines lets students conduct exchange activities that go beyond linguistic and cultural boundaries with local students.

Acceptance of international students

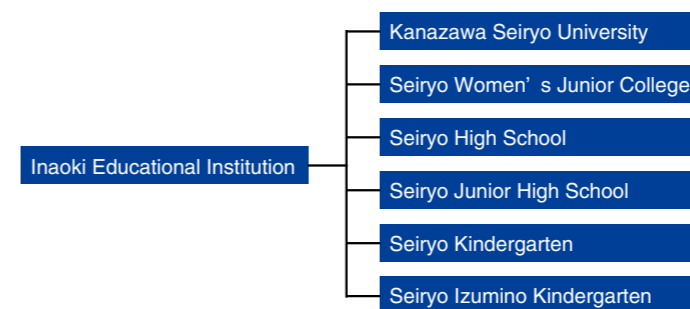
Since 1997 the Faculty of Economics has accepted a large number of international students. International students from China, South Korea, and Russia have joined the university as undergraduate students, third-year transfer students, and graduate school students, and have obtained academic degrees. There are currently 54 international students from China and Russia studying at the university.

In the future, we aim to increase the number of overseas universities with which we conduct academic and research exchanges to 30 universities. Additionally, we will actively promote the globalization of the university itself with regard to education and research.

At Kanazawa Seiryō University we welcome prospective students who sympathize with our school philosophy, want to develop their ability to surpass themselves and who want to learn to act on the global stage while retaining their ties with the local community. We are looking forward to hearing from you and helping you achieve your dreams.

Inaoki Educational Institution

Inaoki Educational Institution, which is home to Kanazawa Seiryō University, was founded in 1932. Today it has 300 faculty and staff members and around 4,700 students. It is a comprehensive educational institution consisting of a kindergarten, junior high school, high school, women's junior college, a university and a graduate school.



History

1932	Hokuriku Meisei Abacus and Bookkeeping Vocational School established
1948	Jissen Commercial High School established
1965	Seiryō Kindergarten established
1967	Kanazawa Keizai University (now Kanazawa Seiryō University) established
1972	Kanazawa Keizai University Seiryō Junior High School established
1979	Seiryō Women's Junior College established
1983	Seiryō Izumino Kindergarten established
2002	Kanazawa Keizai University renamed Kanazawa Seiryō University. Graduate School of Economics, Department of Research on Regional Economic Systems, established
2007	Department of Human Sciences established
2008	Graduate School of Economics, Department of Research on Regional Economic Systems renamed Graduate School of Strategic Management
2012	Seiryō Women's Junior College renamed Kanazawa Seiryō University Women's Junior College

School Philosophy :
The cultivation of sincere professional people who can play a useful role in society.

Kanazawa Seiryō University International Exchange Center

Kanazawa Seiryō University-International Exchange Center

From the late 1990s, Kanazawa Seiryō University has been actively engaging in exchanges with overseas universities. In order to continue these efforts to internationalize our university, the International Exchange Center was established in April of 2014. The International Exchange Center, as the center of international education at our university, promotes study abroad amongst Kanazawa Seiryō University students, provides support for short-term international students, and facilitates exchange between KSU and other institutions of higher education.

Currently, Kanazawa Seiryō University has concluded academic exchange agreements with 23 universities from 14 different countries, including China, Russia, the United States, and the United Kingdom. Students at Kanazawa Seiryō University have opportunities for both short-term and long-term study abroad programs at any one of these institutions. Moreover, each year we accept both short-term international students from partner schools as well as full-time international students. All international students are providing academic advising as well as a Japanese language support in order to make the transition into Japanese university life both easy and fulfilling.

As we continue to expand our partnerships with foreign universities, the staff of the International Exchange Center will continue to put forth their best efforts in order to develop Kanazawa Seiryō University into a global university.



Inter-University Exchange Agreements with Overseas Institutions (As of August, 2014)

NO		University Name	Nationality	Agreement Signature Day
1	National	Jilin University	China	1997/10/24
2	Public	Dongbei University of Finance and Economics	China	1999/4/13
3	National	Suzhou University	China	2001/2/21
4	Private	Dong-A University	Korea	2001/7/12
5	National	Irkutsk State University	Russia	2001/9/02
6	Public	University of Tampere	Finland	2002/9/26
7	Public	Fachhochschule Gelsenkirchen University of Applied Sciences	Germany	2002/12/10
8	Public	Reutigen University	Germany	2003/7/04
9	National	Kodolányi János University College	Hungary	2004/9/06
10	Public	Canterbury Christ Church University	UK	2004/9/17
11	Public	Burgundy School of Business	France	2006/8/16
12	National	Dalian Nationalities University	China	2006/10/24
13	Public	Dalian Polytechnic University	China	2008/1/18
14	Public	Central Queensland University	Australia	2010/5/19
15	Public	Shanghai University of Sport	China	2012/3/23
16	Public	Niagara College	Canada	2012/7/13
17	Private	Mindanao International College	Philippines	2013/12/19
18	National	University of Kent	UK	2014/5/01
19	Private	Daegu Hanny University	Korea	2014/5/01
20	Public	University of Houston	USA	2014/6/01
21	Public	University of Houston – Downtown	USA	2014/6/01
22	National	Language Centre, University College Cork	Ireland	2014/6/01
23	Private	Providence University	Taiwan	2014/8/01

Study in SEIRYO

Study at Kanazawa Seiryō University

In order to address the financial concerns of international students who wish to study at KSU, the university provides a number of financial aid opportunities, including scholarships and a reduction in tuition fees. Moreover, international students from one of our partner universities will receive free accommodation for 1 year during their stay at Kanazawa Seiryō University.

1. Exemption of Tuition Fees

For both full-time international students as well as international students visiting from one of our partner universities, tuition fees are lowered 30% for the first year enrolled at Kanazawa Seiryō University. Additionally, students from one of our partner universities are exempted from paying the matriculation fee. (Please refer to the shaded portion of the table below for details)

University Fees (¥)

Expenses	Full-Time Undergraduate Students		Full-Time Graduate Students		Japanese Language Program Participants Half-Year (Spring/Fall Course)
	3rd Year Transfer Students	4th Year Students	1st Year Students	2nd Year Students	
Matriculation Fee	120,000		120,000		None
	(Exemption for Partner Universities)		(Exemption for Partner Universities)		
Tuition	660,000	660,000	690,000	690,000	280,000
	462,000	462,000	483,000	483,000	
Supplementary Materials and Facility Usage Fees	300,000	300,000			
Other Additional Fees	23,500	22,500	2,500	2,500	
Total Estimated Expenses	1,103,500	982,500	812,500	692,500	280,000
	785,500	784,500	485,500	485,500	

Note: The above fees are from April of 2014 and may change in the future.

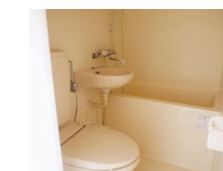
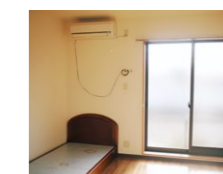
2. Scholarship and Financial Aid Opportunities

For students in need of financial support, Kanazawa Seiryō University offers a scholarship to full-time international students who are in excellent academic standing and are active members of the campus community. Moreover, there are a number of scholarship opportunities provided by the Japanese government and private organizations for both full-time international students as well as international students from partner universities.

Scholarship	Amount (¥)	Qualifications
Kanazawa Seiryō University Full-time International Student Scholarship	50,000/month	The top three academically-qualified students (Annual)
Japanese Government Scholarship	Graduate Level 152,000/month	Recruitment and selection is by university recommendation-the acceptance rate is low (By university selection)
	Undergraduate Level 123,000/month	
Scholarship for Privately Financed International Students	Graduate Level 65,000/month	Selection is determined by the university and recommendations for the scholarship are applied for in early May of each year-the acceptance rate is high (By university selection)
	Undergraduate Level 48,000/month	
Ishikawa Prefectural Government Scholarship for International Students	20,000/month	Recruitment and selection is by university recommendation-the acceptance rate is high (By university selection)
Private Organization Scholarships	Varies depending upon organization	(1) The university nominates candidates for the scholarship (By university nomination)
		(2) Students apply for the scholarship directly (By direct application)

3. International Student Dormitory

For international students from one of our overseas partner universities, an international student dormitory will be provided free of charge for the first year of enrollment (utility fees are the responsibility of the student). If there is an empty room, international students that do not fit the above-mentioned conditions must pay rent of 20,000 yen per month plus utility fees to stay in the dormitory. All international student dormitory rooms include a unit bath (bath tub/shower plus toilet), wardrobe, bed (bedding is not included), mini-kitchen with one IH heater, refrigerator, air conditioning, LAN cable, and lighting.



Japanese Language Studies Program

With the continual efforts by Kanazawa Seiryō University to internationalize, the need to provide further Japanese language support for international students has led to the creation of the Japanese Language Center. Providing both language and cultural education, the Japanese Language Center supports international students through both the Japanese Language Studies Program and the Short-Term Japanese Language and Culture Study Abroad Program.

1. Japanese Language Studies Program

Beginning in both September and April of each year, the Japanese Language Center offers a 15-week Japanese Language Studies Program for international students. With elementary, intermediate, and advanced level courses, students may either automatically enroll in the elementary level course or take a placement test for a higher level course.

The Japanese Language Studies Program also provides opportunities for students to learn about traditional and modern Japanese culture through classroom activities and events. Moreover, many opportunities are provided for international students to interact with KSU students, further developing international understanding and a multi-cultural campus.

Course Description

Course Level	Target Students	Program Contents	Goal	Kanji Learned	Vocabulary Learned
Elementary	Beginning Japanese language learners	Students will learn survival Japanese for everyday life and will become proficient users of elementary level Japanese	Pass the JLPT N4	300	1,500
Intermediate	Completed 450 hours of Japanese study and the elementary level course	Students will deepen their understanding of Japan and improve their Japanese abilities in order to study and conduct research at the university level	Pass the JLPT N2	1,000	6,000
Advanced	Completed 600 hours of Japanese study and the intermediate level course	Students will cultivate advanced reading comprehension, writing skills, and oral expression in order to become an active member of Japanese society	Pass the JLPT N1	2,000	10,000

Example Schedule of Intermediate Course

Time	Mon	Tue	Wed	Thu	Fri
8:50~10:20	Grammar (B)	Grammar (B)	Kanji (B)	Grammar (B)	Japanese Culture and Society
10:30~12:00	Conversation (B)	Conversation (B)	Reading/Writing (B)	Conversation (B)	Japanese Culture Training



2. Short-Term Japanese Language and Culture Study Abroad Program

Each year, Kanazawa Seiryō University hosts international students from overseas partner universities for a 2-4 week long Japanese language and culture study program. Visiting students study Japanese in small classes and have many opportunities to interact with Kanazawa Seiryō University students, allowing for their Japanese language abilities to improve despite their limited period of time in Japan. Moreover, visiting students experience a wide variety of Japanese traditional culture, such as tea ceremony and calligraphy, and go on field trips to experience local culture, such as learning about Kanazawa's traditional craftworks.

Interaction with the university's Japanese students is also incorporated so that students can learn living Japanese language and Japanese culture. It is always a popular program among participating international students and gets high marks for satisfaction.

Overview of 2014 Short-Term Japanese Language and Culture Training Program (May 18th-June 11th)

	08:50-10:20	10:30-12:00	lunch	12:50-14:20	14:30-16:00	17:40-18:30	
May	Sunday 18	11:30 Arrive at Kanazawa		Orientation	Things to buy		
	Monday 19	Visit to president's office/greetings	Campus tour	Placement test interview	Welcome party		
	Tuesday 20	Japanese language program	Calligraphy class	Information on life in Japan	Interaction with Japanese students	Training center information Dance school tour	
	Wednesday 21	Japanese language program	Information on Kanazawa life and culture	Library	Presentation & Discussion		
	Thursday 22	Kanazawa sightseeing, including Kenrokuen Garden, 21st Century Museum of Contemporary Art, Kanazawa, prefectural office and Ninja-dera (Myoryuji Temple)					
	Friday 23	Japanese language program	SJP (Seiryō Jump Project)	Participation in lecture	Japanese confectionery class (tourist center)		
	Saturday 24	Wajima sightseeing, Chirihama Beach Driveway, Senmaida Rice Terrace, foot bath, traditional craft class					
	Sunday 25	Free time on final day					
	Monday 26	Japanese language program	Cultural presentation on your own country	Library	SJP (Seiryō Jump Project)	Special seminar	
	Tuesday 27	Japanese language program	Fun with children	Tea ceremony class	Special seminar	Training center information: Watch Dance Club practice	
	Wednesday 28	Japanese language program	Explanation of Japanese culture and Wajima	Japanese confectionery class (tourist center)			
	Thursday 29	Sightseeing in Shirakawa-go and Takayama					Dance practice
	Friday 30	Japanese language program	SJP (Seiryō Jump Project)	Yukata class	Dance practice		
	Saturday 31	Participation in Hyakumangoku Odori-Nagashi wearing yukata					
	June	Wednesday 11	Japanese language program presentations (conferral of certificate at president's office)			Farewell party (departure via overnight bus same day to Kanazawa Station)	



Campus Life



Entrance Ceremony



Orientation



Interacting with Japanese Junior High School Students



Participating in the International Culture Festival



Participating in a Traditional Kanazawa Festival



Trying Japanese Culture



Classes



Job Hunting



International Student Speech Contest



University Festival



Graduation Day



Facilities



Career Support Center

The Career Support Center also has an employment support office for the university and junior college. The center serves as a base for students preparing for employment, and includes a Guidance Room and Powder Room.



Seiryō Extension Center

The Seiryō Extension Center supports students in achieving qualifications, including certifications and licenses. The center offers a career development program for students aiming to become public officials, tax accountants, or teachers.



Multi-purpose Lecture Theater

The multi-purpose lecture theater can accommodate about 100 people and is used for community events as well as university and junior college classes.



Library

The reading floors are housed in a two-story hall in which students can study in a bright, open atmosphere. The library has 270 seats and more than 170,000 books.



Information Technology Lab Room

The computer room, where information technology related lectures are held, offers a sufficient number of computers for large group audiences.



Piazza Workshop

This creative space consists of five sub-sections: Play, Expression, Rhythm, Shaping, and Experiments. While functioning as a place to learn about children through practice, the Piazza Workshop is also open to the community as a venue of exchange between children and students.



Training Center

The first floor has a training room equipped with gym equipment and a studio used for dancing, etc. The second floor is a dojo for martial arts, such as kendo, judo, and karate.



Gymnasium

The sub-arena (first floor) can be used for baseball or tennis practice. The main arena (third floor) is a floor that consists of two courts for volleyball or basketball.



Student Hall

This space, equipped with vending machines and a TV, is provided to students for relaxation between lectures and as a space to enjoy conversation together.



University Office

The different services provided by the University Office supports various aspects of student life.



Inaoki General Training Field

Kanazawa Seiryō University is known for its sports-related achievements. Our featured training field has Japan's first ever blue tracks, which are approved by the Japan Association of Athletics Federations as Class 4 tracks, and is also equipped with equipment for night events.



Nurse's Office and Student Consultation Room

The Nurse's Office and Student Consultation Room cooperate with each other to protect the physical and mental well-being of students.

A City Full of History - Kanazawa Outline

Kanazawa is the prefectural capital of Ishikawa Prefecture and located in the central part of the mainland of Japan. The southeast of the city faces the mountains and the northwest area faces the Sea of Japan. The city is located between the Saigawa River and the Asano River. Kanazawa Castle Park and Kenrokuen Garden (one of the three greatest gardens in Japan) are located in the center of the city, and shopping quarters (Korinbo, Kata-machi, Musashi, and Kanazawa Station) surround them.

Kanazawa has a population of 463,536 (as of August 2013), and is the center of the economy and culture of the Hokuriku area (Toyama Prefecture, Ishikawa Prefecture, and Fukui Prefecture). The shopping quarters in the city are crowded with shoppers from various parts of Hokuriku on holidays.

Moreover, Kanazawa is a leading tourist city with 7 million tourists visiting every year. It was a great castle town ruled by an influential leader from the 17th century to the second half of the 19th century. Kanazawa has not suffered from any war devastation or big natural disaster. Therefore, Kanazawa maintains rows of historical houses and inherits traditional handicrafts and performing arts.

The Hokuriku Shinkansen (a high-speed railway line) from Tokyo to Kanazawa will come into operation in 2014, and further economic development of Kanazawa is expected along with an increase in the number of sightseers.

The climate of Kanazawa is almost as mild as that of Tokyo or Osaka. There are not many days with temperatures below freezing point between December and February, although snow can often pile up.



Around Kanazawa Station



Kanazawa Castle Park



Kenrokuen Garden



Higashi Chaya District



Kanazawa Gold Leaf



21st Century Museum of Contemporary Art, Kanazawa

Photo courtesy of Kanazawa

Access



From Tokyo Narita Airport by air

- About 1 hour 15 minutes from Narita airport to Komatsu airport by airplane.
- About 1 hour from Komatsu airport to Kanazawa station by bus.

From Tokyo Haneda Airport by air

- About 1 hour from Haneda airport to Komatsu airport by airplane.
- About 1 hour from Komatsu airport to Kanazawa station by bus.

*Note: It can sometimes be convenient to fly into one Tokyo airport and fly out of another. An airport bus travels between Narita and Haneda airport, taking about 1 and a half hours.

From Tokyo Narita Airport by train

- About 1 hour from Narita airport station to Tokyo station by express train.
- About 4 hours from Tokyo Station to Kanazawa Station.

From Kansai International Airport by train

- About 1 hour from Kansai International Airport Station to JR Osaka Station by train.
- About 2 and a half hours from Osaka Station to Kanazawa Station by express train.

From Kanazawa Station

- Take the JR Bus Maki Line (East Exit No.4 Stop) bound for Higashi-Nagae or Kofutamata via Naruwa and Seiryu High School and get off at the "Seiryu High School" stop (15 minutes) and walk for 1 minute.
- If you are taking any other JR Bus that departs from the East Exit No.4 Stop, get off at the "Naruwa" stop and walk for 10 minutes.
- If you are taking the Hokuriku Railroad Bus from No.1 Stop that is bound for Yanagi-bashi, get off at the "Naruwa" stop (15 minutes) and walk for 10 minutes. You can also take a taxi from Kanazawa Station (10-minute drive).
- Kanazawa Station is one stop from Higashi-Kanazawa Station (5 minutes).

From Higashi-Kanazawa Station

- Take the Hokuriku Railroad Bus bound for Kanazawa Seiryu University and Seiryu High School and get off at the "Seiryu High School" stop (3 minutes) and walk for 1 minute.
- You can also take a taxi from the station (3-minute drive) or walk (20 minutes on foot).

From Hokuriku Expressway Morimoto Interchange Exit

- Drive on the Yamagawa Kanjo (Kanazawa Tobu Kanjodoro) toward Kenrokuen and exit from Higashi-Nagae Exit (1-minute drive from exit).

From Komatsu Airport

- About 1 hour by car.

Kanazawa Seiryu University
Student Affairs Department
10-1 Ushi, Goshomachi, Kanazawa-shi, Ishikawa Prefecture 920-8620
TEL: +81-76-253-3925 Contact: gakusei@seiryu-u.ac.jp